

Avtron LPH150S

Compact, Portable Load Bank - 150 KW

Testing Your Emergency Standby Generator with a Load Bank Means Reliability When it Matters Most.

Key Features

- Rated for Continuous Operation
- Network Capability: Control up to 12 Load Banks with a Single Hand-Held Controller
- Control up to 1800 KW with a Single Controller
- Compact, Portable, Easy to Transport and Operate
- Large Load Capacity - up to 150 KW
- Rugged Aluminized Steel Enclosure with Casters
- Digital Operator Controls with Metering and 16 Point Load Profile Capacity
- Data Logging available when purchased with Sigma™ PC Software

Superior Avtron quality combined with simple operation and maintenance will provide years of trouble free service.

Avtron's extensive line of Load Bank and Industrial Resistor Products are solid performers used throughout the world.

For total technical support or additional information, please contact Avtron at (216) 573-7600 or LBsales@Emerson.com.

Quality System Certified to ISO 9001

The Avtron Model LPH150S Load Bank is a portable, self-contained AC resistive model designed for indoor use.

The Avtron LPH150S Load Bank gives users the freedom of a high capacity load in a compact package. The LPH150S is ideal for routine testing and maintenance of AC power sources such as stand-by emergency generators and UPS systems. This load bank provides a full 150 KW at 480 VAC or 240 VAC, 3 Phase, 60 Hz.

This versatile load bank weighs approx. 220 lbs. [99 kg] and is approx. half the weight and size of traditional load banks of similar capacity. The load bank features horizontal air discharge to provide a low profile design. Quick-connect load terminals and simple operation allow the load bank to be set up and operated by a single technician, saving valuable time in the field.

The load bank controls and cooling fans are powered by any standard 120 VAC, single phase wall outlet with detachable line cord provided. An integral control panel includes the necessary controls and status indicators.

The entire control of the LPH150S is via the Intelligent Hand-Held Terminal (IHT). The IHT provides all control and metering functions along with network capability to control multiple load banks.



LPH150S 150 KW Portable Avtron Load Bank shown with IHT Hand-Held Terminal.

Avtron LPH150S

Compact, Portable Load Bank - 150 KW

Specifications subject to change without notice.

Construction

A compact aluminized steel enclosure with screened inlet and exhaust openings. Four swivel casters provide mobility. Heavy duty lifting handles are also provided.

Control Power

The load bank requires control power of 120 VAC, single phase, 60 Hz (line cord provided).

Cooling

The resistive elements are air cooled by four high velocity muffin fans for quiet operation.

Controls

Intelligent Hand-Held Terminal (IHT) System Control. The IHT comes standard with a 32.8' [10 m] connection cable. The IHT includes digital display of Volts, Amps, Frequency and KW, Phase to Phase amps, Load Programming, and ModBus.

Local Panel includes: Control Power ON/OFF toggle switch, START Operation push button, STOP/RESET push button, STATUS UNIT ON TEST indication, STATION SELECT rotary switch.

Hand-Held Interface: IN/OUT Connection Port.

Safety Circuits

The LPH150S Load Bank features main line circuit fusing, wrong voltage protection (Dual Voltage model only), and overtemperature protection.

Load Capacity Ratings: (3 phase, 60 Hz)

Load Step Resolution is 5 KW

Rated KW	Rated Voltages
150	480/240 VAC

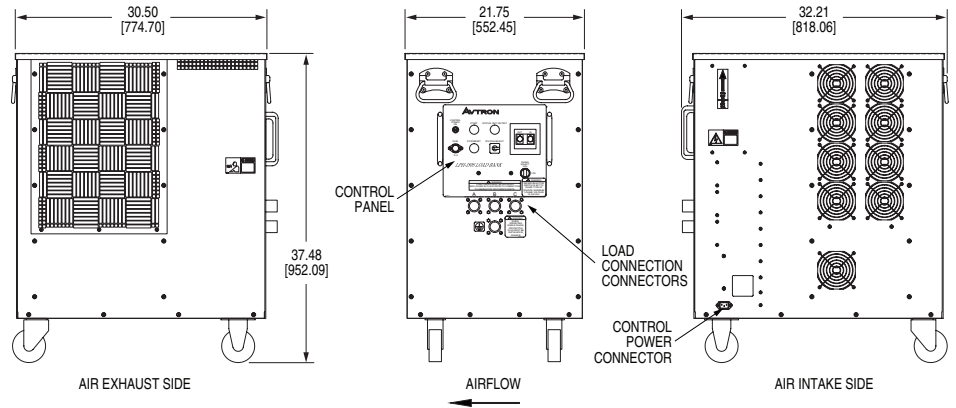
NOTE Designs for international 50/60 Hz voltages are available. Consult factory.

Load Bank Weight (approx.)

220 lbs. [99 kg]

Options

- 10' Cable Set with Connectors
- Manual (Toggle Switch) Control
- Transport Case
- SIGMA™ PC Load Control Software



All dimensions are in inches [millimeters].



Emerson Network Power

Avtron • 6255 Halle Drive, Cleveland, Ohio 44125, U.S.A.
216-573-7600 • FAX: 216-573-5953 • LBsales@Emerson.com

EmersonNetworkPower.com/loadbank

Emerson, Consider it Solved and Emerson Network Power are trademarks of Emerson Electric Co. or one of its affiliated companies. All the other marks are the property of their respective owners.

SIGMA™ is a trademark of NJ Froment & Co. Ltd. Specifications subject to change without notice.

©2016 Emerson Network Power

Bulletin 605 • Rev. D

EMERSON. CONSIDER IT SOLVED.™